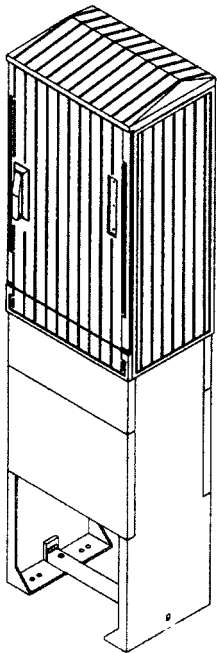


FREE-STANDING CABLE DISTRIBUTION BOXES KVS SIZE 00-2

The free-standing cable distribution boxes KVS size 00-2 are made of glass-fiber-reinforced polyester. They are used for the electric power distribution in industry, in electrification of railroads, for the distribution of telecommunication cables, for street lighting. They are mounted on polyester or concrete pedestals.

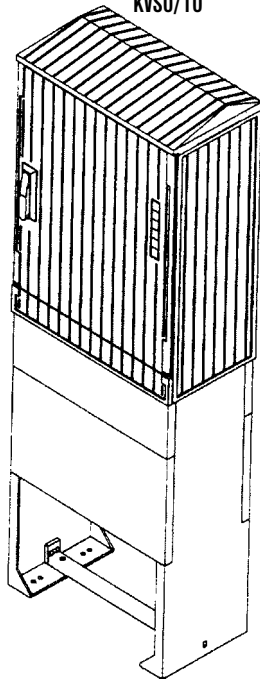
- Standards: EN60439-5, VDE 0660/503, DIN 43629/1
- Three-point door closing with a revolving handle and the possibility of incorporating a half-cylinder insert
- The door opens at 180°
- Replacement of doors and lateral sides without tools
- A modern design with a surface unsuitable for posting up placards
- The cabinet equipment at choice
- A system with name plates for both internal and external use
- Protection classification IP 43
- Material resistant to UV radiation, acids, strokes, atmospheric influences
- Color: RAL 7035

KVS00/10



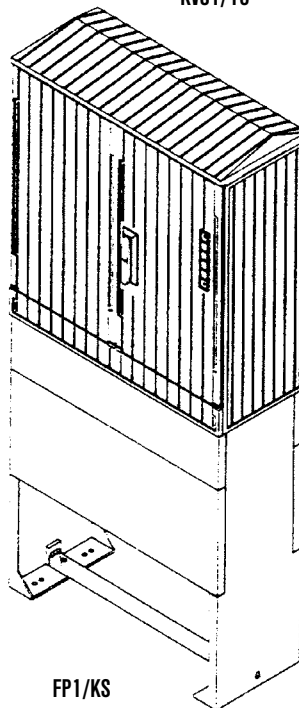
FP00/KS

KVS0/10



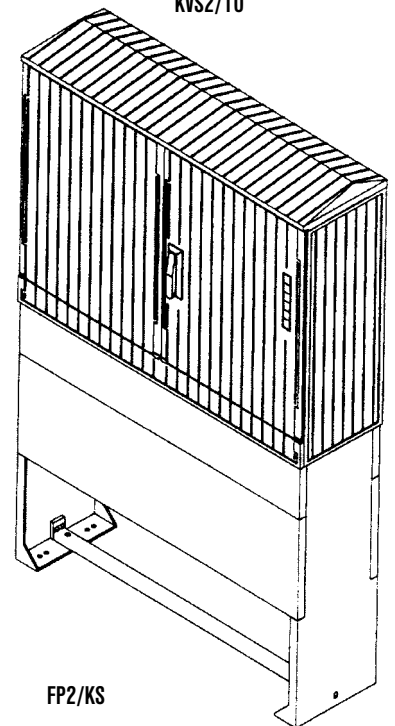
FP0/KS

KVS1/10



FP1/KS

KVS2/10



FP2/KS

Fuse supports with fuse cartridges can be built into the cabinets. The following number of fuse supports size 1, 2, 3 can be built-in:

- KVS00/10 4 fuse supports
- KVS0/10 5 fuse supports
- KVS1/10 7 fuse supports
- KVS2/10 1 fuse supports

Fuse supports size 00 can also be built-in.

CABLE DISTRIBUTION BOXES-EMPTY

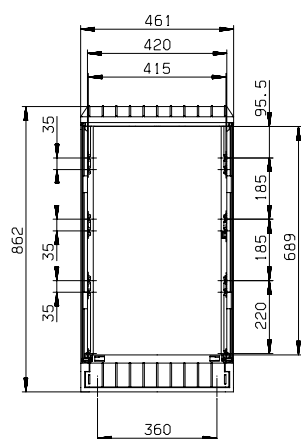


code No.	type
1601001	KVS00/10
1602001	KVS0/10
1603001	KVS1/10
1604001	KVS2/10

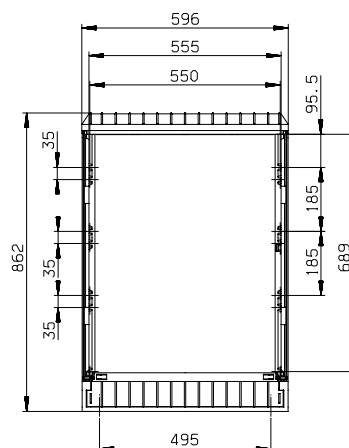
CABLE DISTRIBUTION BOXES WITH CU-BUSBARS



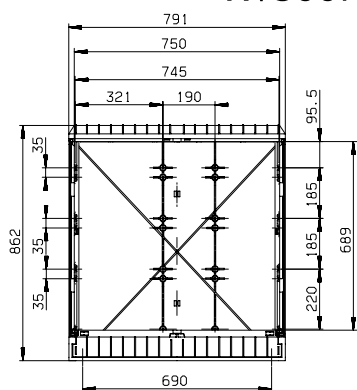
code No.	type
1601002	KVS00/10
1602002	KVS0/10
1603002	KVS1/10
1604002	KVS2/10



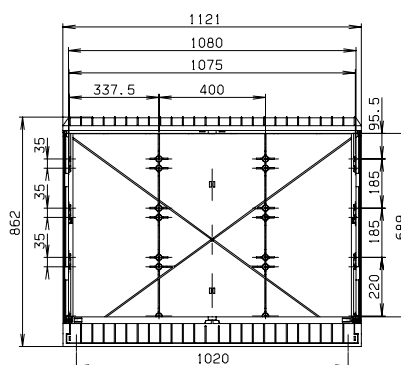
KVS00/10



KVS0/10



KVS1/10

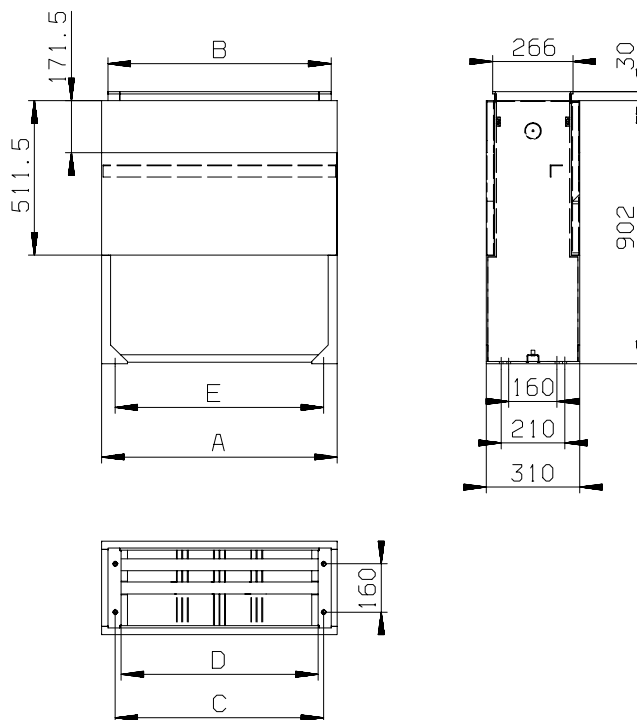


KVS2/10

POLYESTER PEDESTALS



code No.	type	A	B	C	D	E
1611001	FP00/KS for KVS 00/10	450	408	360	322	360
1612001	FP0/KS for KVS 0/10	585	543	495	457	495
1613001	FP1/KS for KVS 1/10	780	738	690	652	690
1614001	FP2/KS for KVS 2/10	1110	1068	1020	982	1020



GRID BASE PLATE



code No.	type
1601001	GPL00/10 for FP00
1602001	GPL0/10 for FP0
1603001	GPL1/10 for FP1
1604001	GPL2/10 for FP2

CABINET LIGHTING

code No.	type
1691008	LTST